

# CERTIFICATE OF LOCATION OF GOVERNMENT CORNER

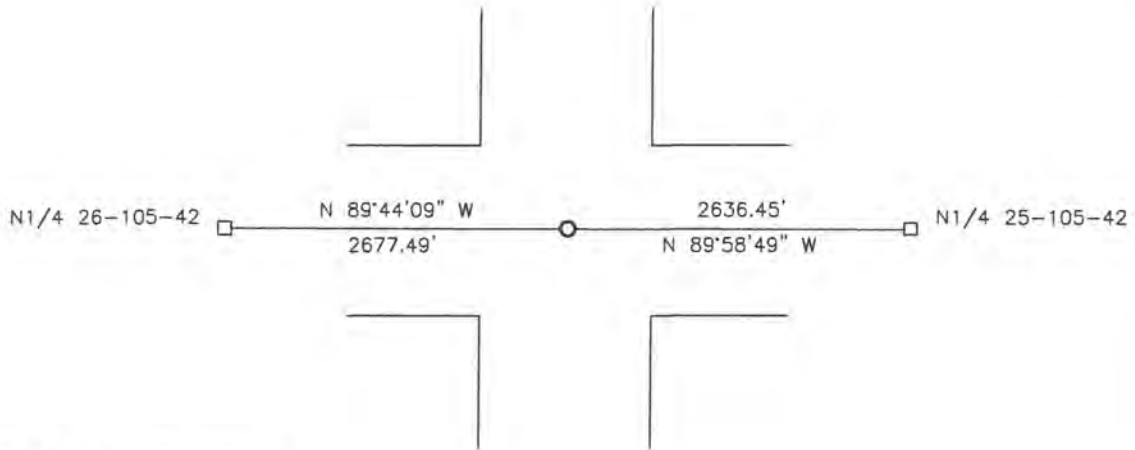
NORTHEAST Corner of Section 26, Township 105, Range 42, 5TH P.M.

STATE OF MINNESOTA, County of MURRAY

At the corner location shown on the sketch:

- On \_\_\_\_\_ found a \_\_\_\_\_  
DATE
- left monument as found,  lowered monument,  removed monument (explain)
- On 07-17-2018 placed a SURVEY SPIKE WITH SEAL #43844.  
DATE

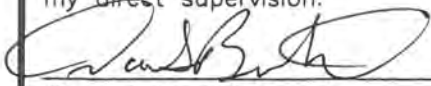
## SKETCH OF REFERENCE TIES



Minnesota State Plane Coordinate  
System Murray County Datum  
NAD83 (1996)  
N: 110678.871  
E: 479700.292

Statement of evidence relative to this corner location is on back of page.

I hereby certify that this document and the data contained herein was prepared by me or under my direct supervision.

  
 Daniel L. Bueltel  
 License No. 43844

8/28/18  
DATE

## Statement of Evidence

In 1861, Wellman and Smoot did the original subdivision of the township.

On June 7, 1973, the Murray County Highway Department found a concrete monument at the corner. They set a steel pin over the monument.

On September 8, 2012, the Murray County Highway Department found a ½" rebar at the corner.

On June 19, 2017, Bueltel-Moseng Land Surveying found nothing at the corner. We did find a tie from 1973 by using the coordinates the highway department recorded in 2012. We determined that the position Murray County Highway Department recorded was correct.

On July 17, 2018, Bueltel-Moseng Land Surveying set a survey spike with seal #43844 using the coordinates the Highway Department recorded in 2012.